

The Urban Block

FBC for Architects





SPEED
LIMIT
25

2 HOUR
PARKING
8AM - 6PM

NO
PARKING
→

Chez Papillote
Restaurant & Catering

Urban Form-Basics: The Urban BLOCK

Principles

- Chinese Boxes of Outside/Inside (Public/Private)
 - inside/outside Block
 - Inside/outside Parcel/House
- Character change at ALLEY vs street

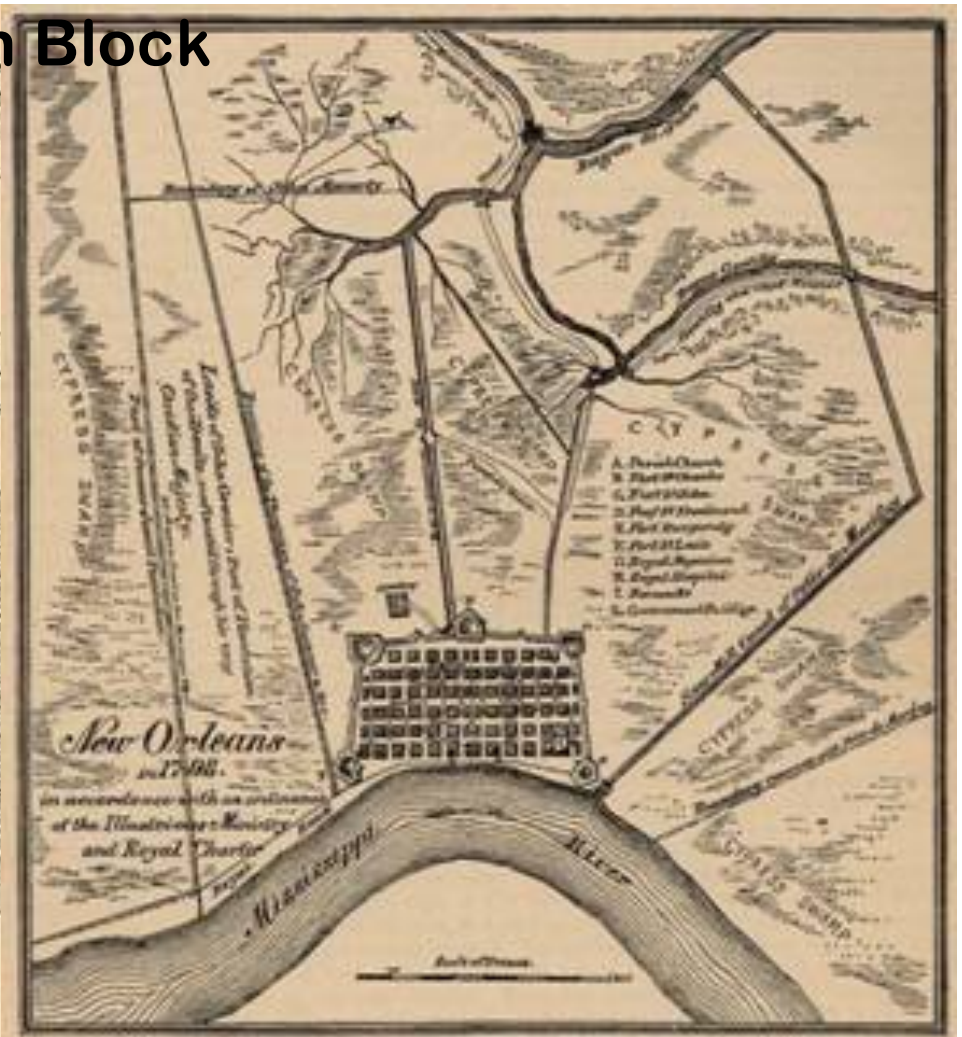
Urban Form-Basics: The Urban Block

Structure:

Blocks comprise Towns

Neighborhoods & Villages

Urban Form-Basics: The Urban Block





Urban Form-Basics: Urban *Renewal*



The Original Site

Fairchild Aerial Surveys, Inc.

WILLIAMSBURG HOUSES

Urban Form-Basics: Urban *Renewal*



WILLIAMSBURG HOUSES





Urban Form-Basics: The Urban Block

Structure:
inside & outside
public & private

Urban Form-Basics: The Urban Block



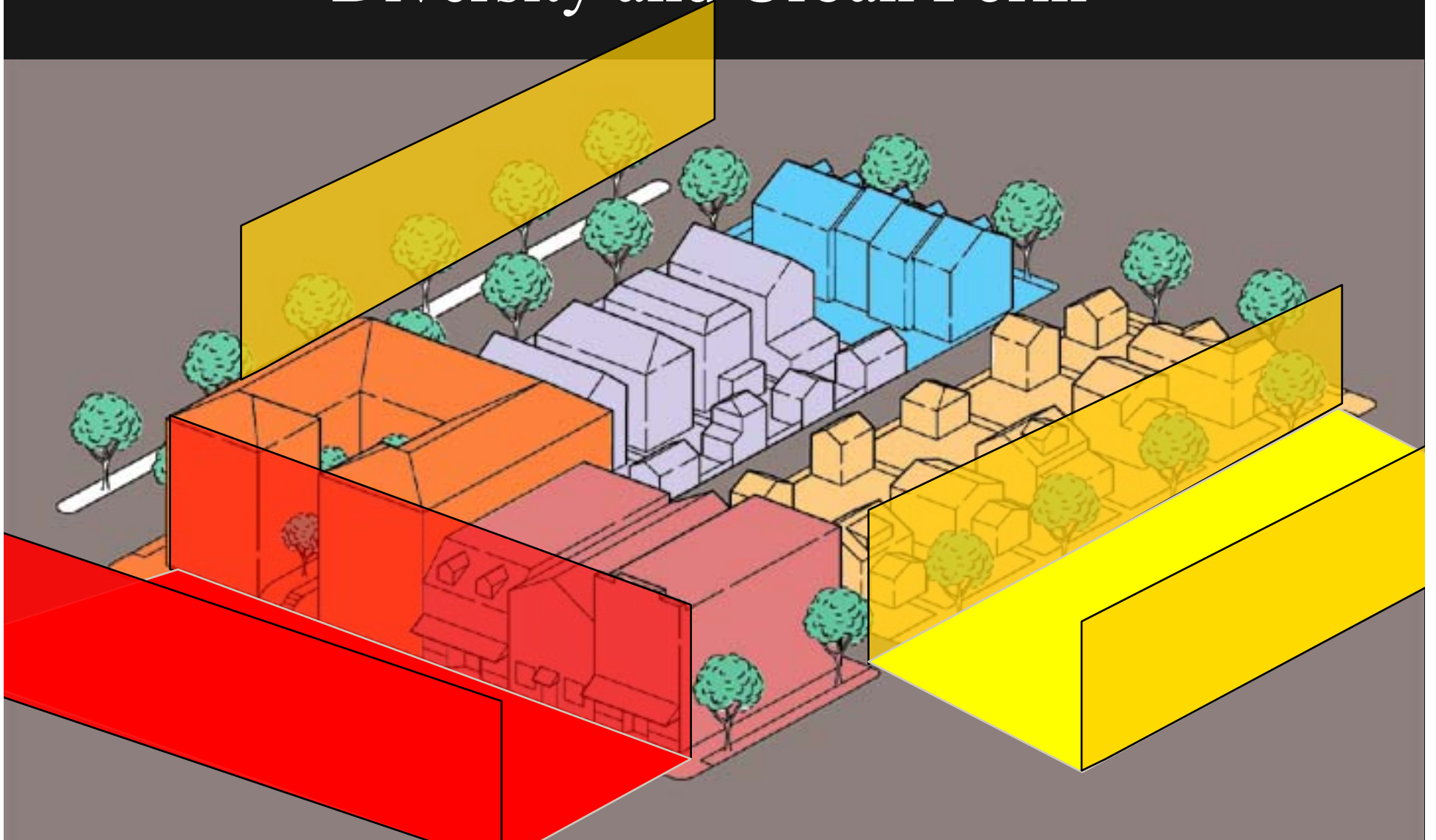
Urban Form-Basics: The Urban Block – Outside/Public



Urban Form-Basics: The Urban Block – Inside/Private



Great Place Basics: Diversity and Urban Form



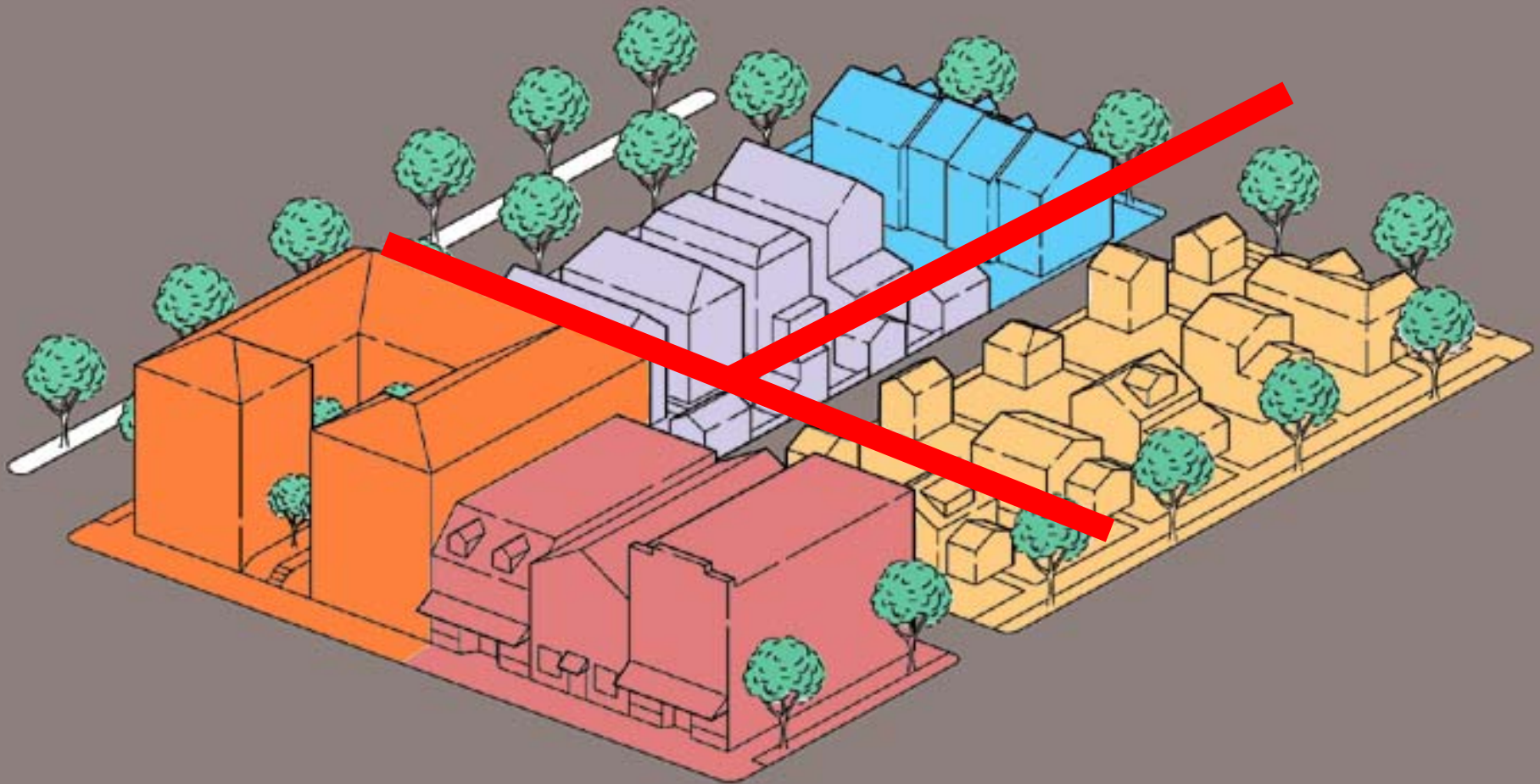
Great Place Basics: Diversity and the Block



The Basics: Complementary Uses



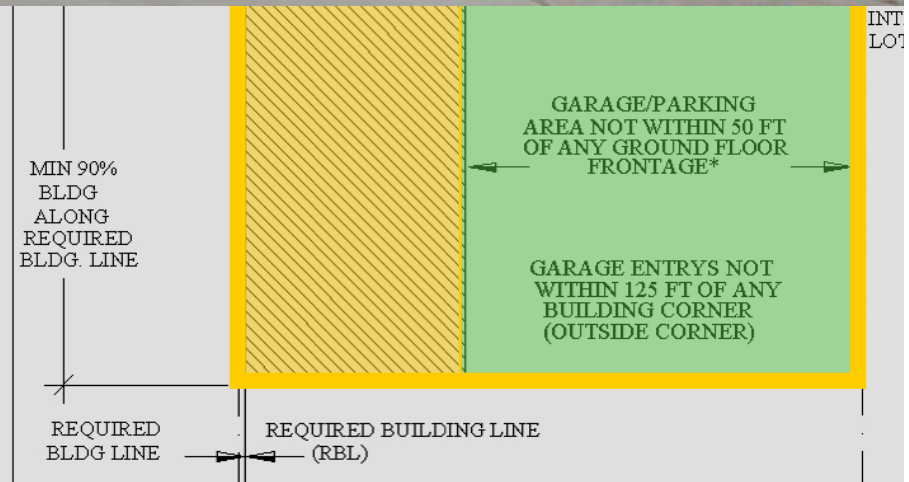
Urban Form-Basics: The Urban Block – Change Uses Within



Great Place Basics: Siting: Lot Coverage / Parking



Siting



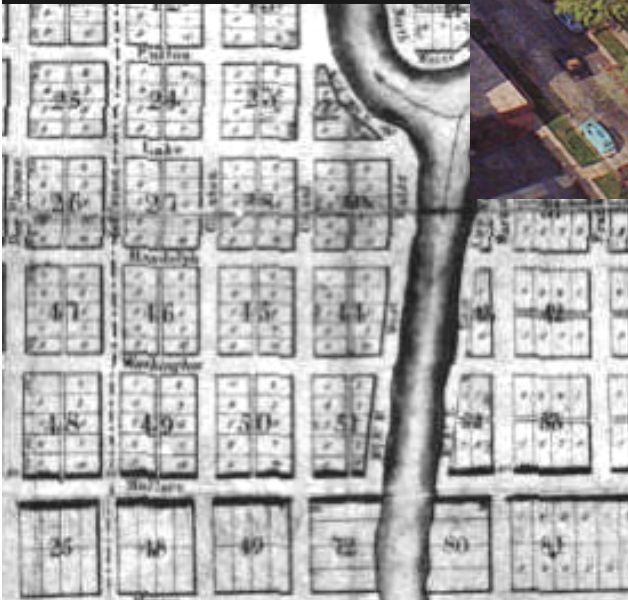
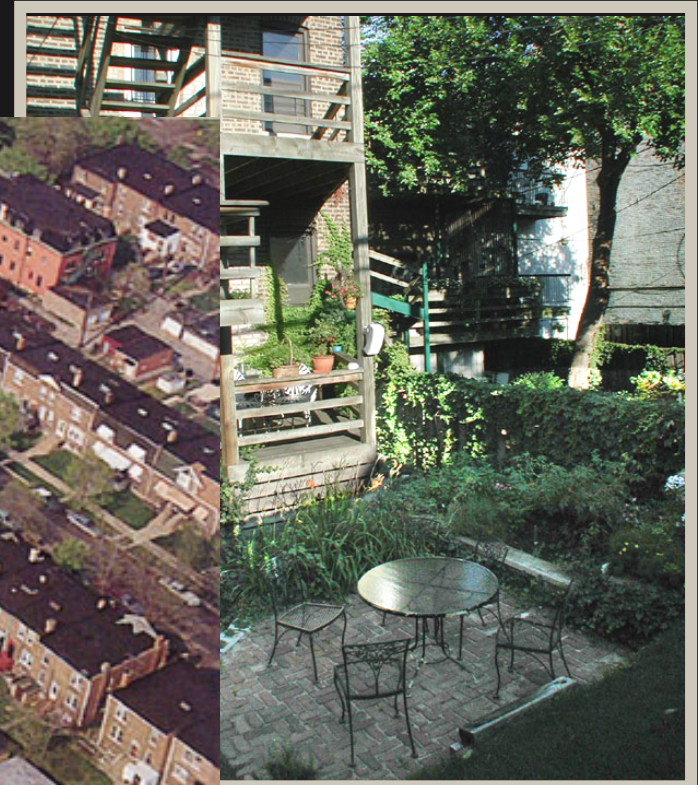
Urban Form-Basics: The Urban Block

Structure:

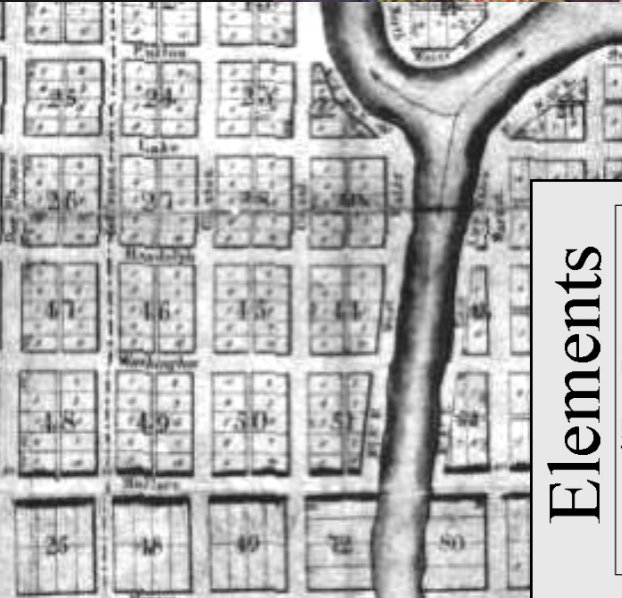
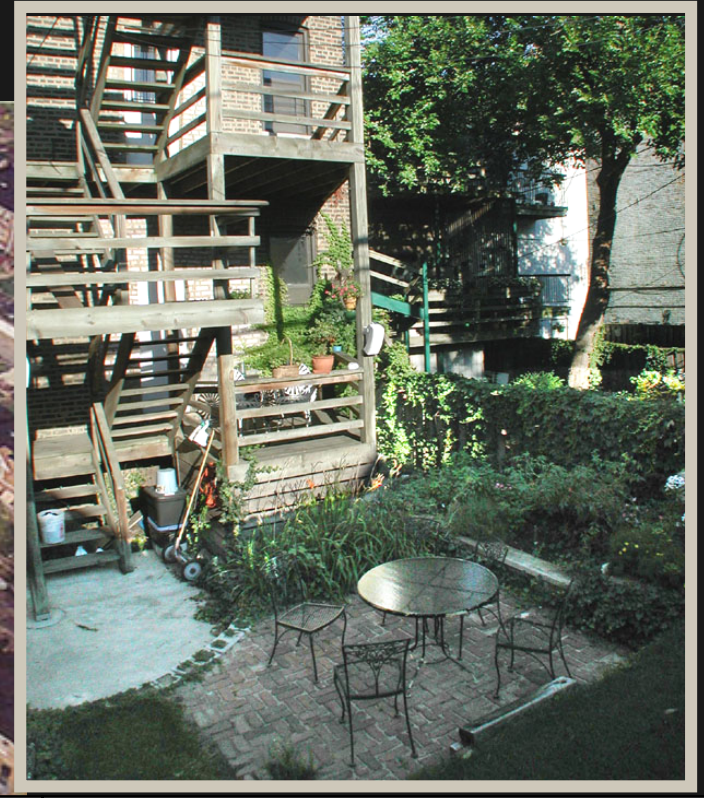
Parcel

Inside & outside

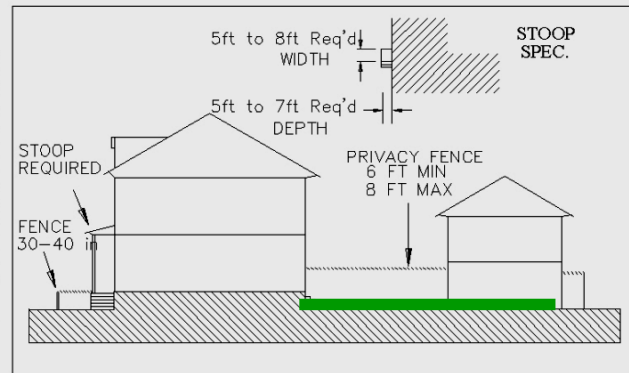
Block Structure: Siting: Private Open Space



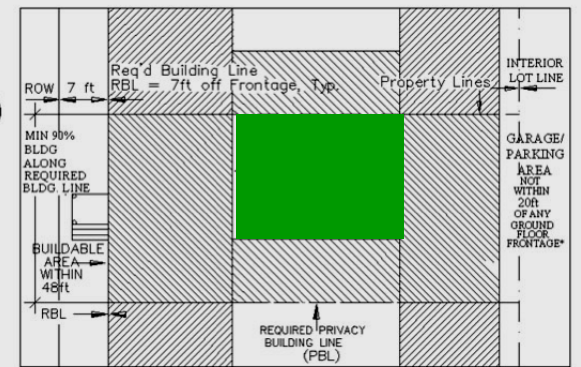
Block Structure: Siting: Private Open Space



Elements



Siting



Urban Form-Basics: The Urban Block – Outside & Inside

Multi-Family, Courtyard



Trees have been omitted for clarity.



clarity.

The block interiors are spatially distinct; these are the private open space of the residents, for children and gardens. They are the lungs of the city.

The building plans work with this public/private duality, placing the more public rooms to the street side, and the private rooms, such as bedrooms, toward the private backyard and/or in the upper floors.



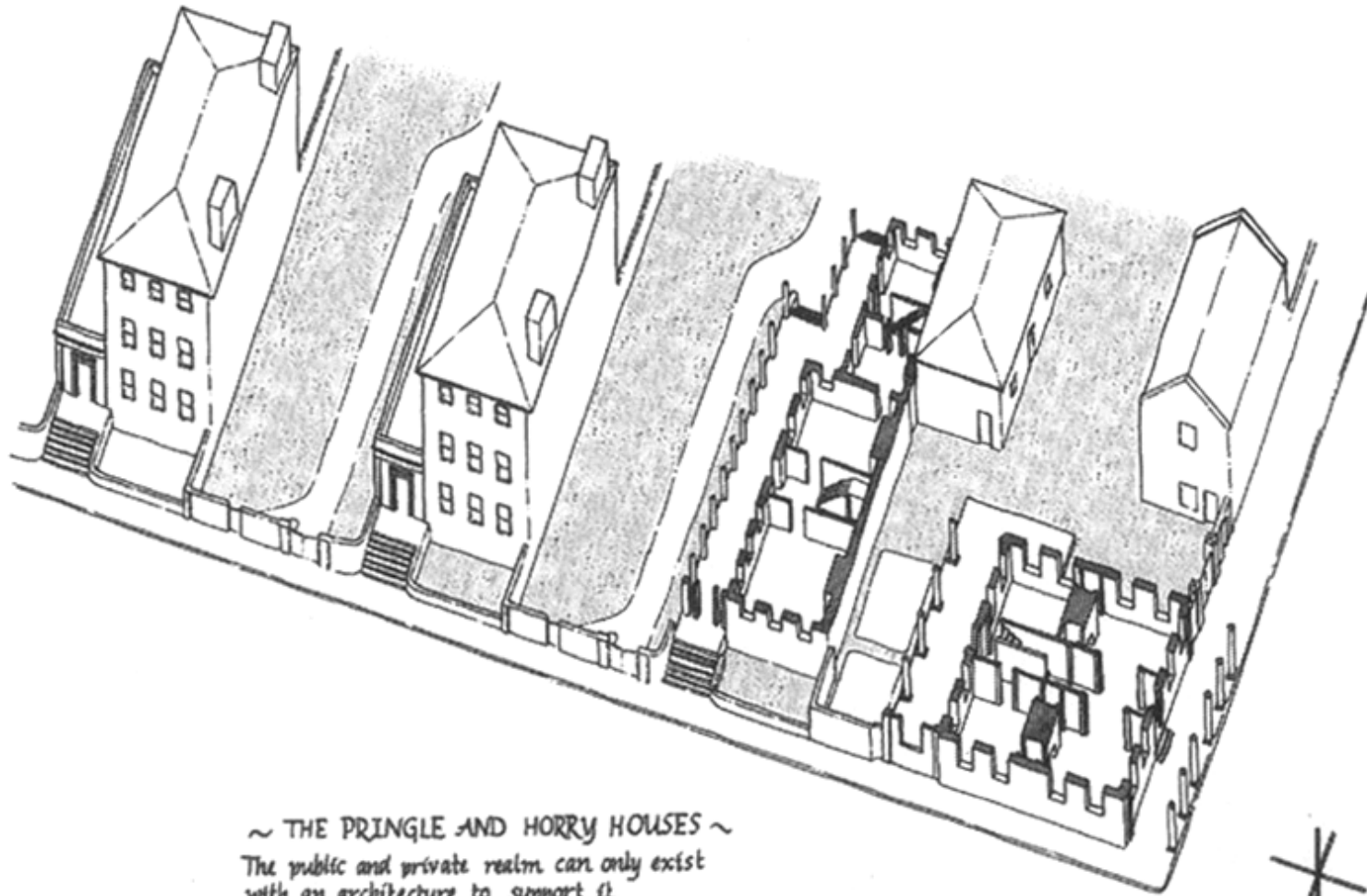


Urban Form-Basics: The Urban Block – Inside/Private



Urban Form-Basics: The Urban Block - Interior

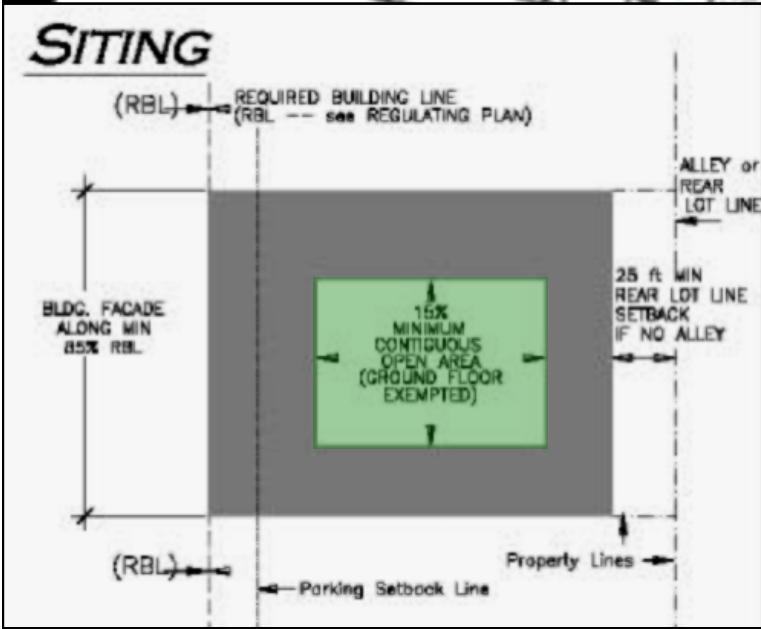




~ THE PRINGLE AND HORRY HOUSES ~
*The public and private realm can only exist
with an architecture to support it.*

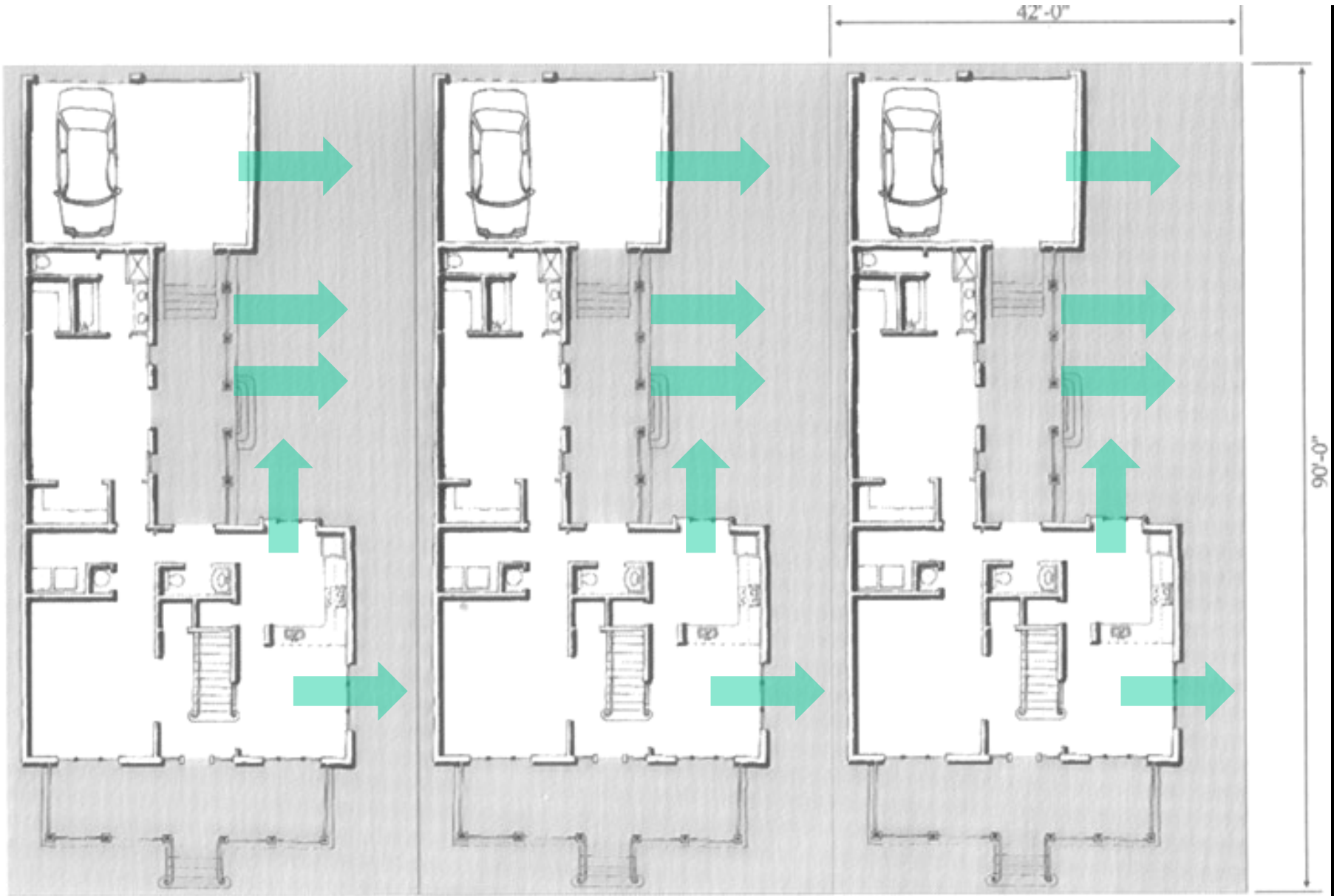
©1991 Richard Jensen

A lesson from the tradition of Charleston, South Carolina, is useful here. The Charleston single-house, which is set “sideways to the street” in series, puts one side of the house broad against the neighbor’s property line (generally to the north). The tradition of north-side manners limits windows on this side to those necessary for light. The northern neighbor then retains the privacy of his/her side yard. Set in series (one side open, the other closed), these houses are able to open fully toward their side-yard gardens.



RINGLE AND HARRY HOUSES ~
 and private realm can only exist
 architecture to support it.



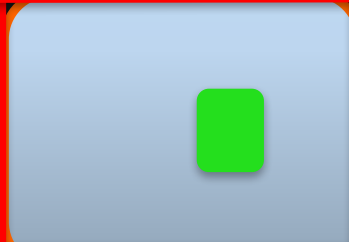
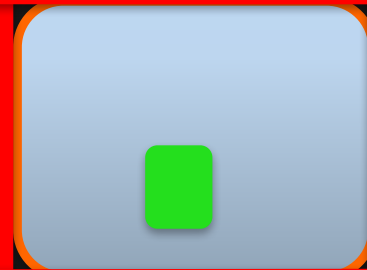
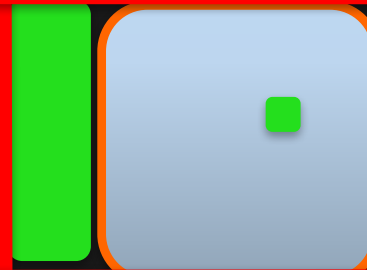
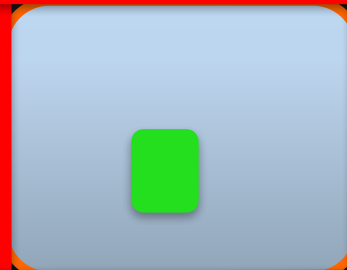
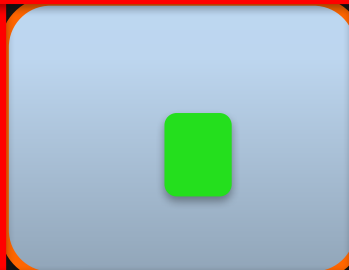
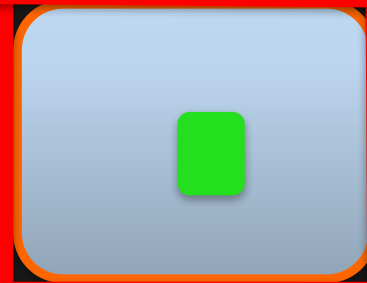
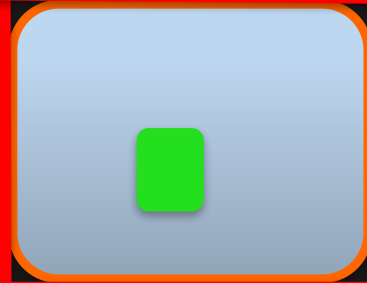
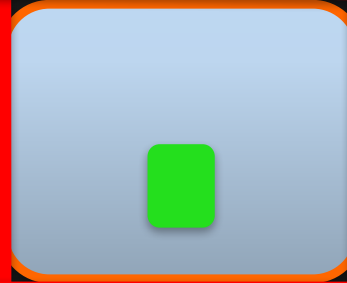
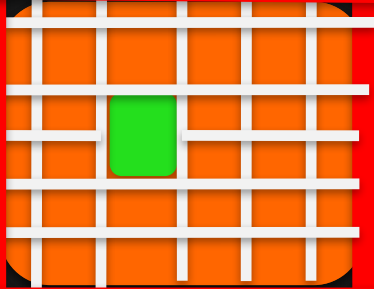


In-town dwellings must provide comfortable private open space (yard) and contribute to creating the public space of the street. These yards are not under scrutiny of the neighbors or from the street. This privacy allows the house to open to its gardens. Private life balances public life.





A City of Neighborhoods

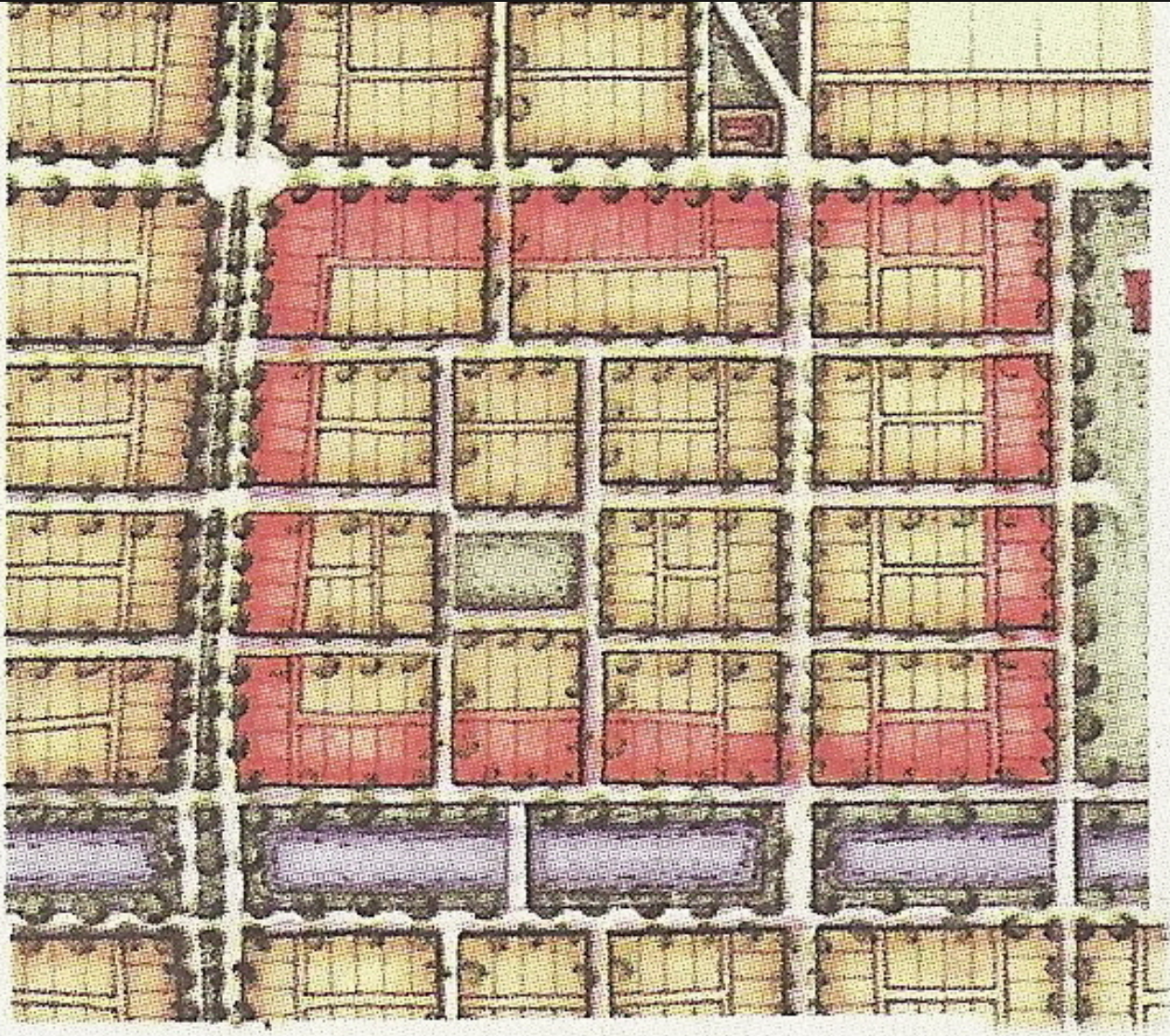


A Hierarchy of Streets

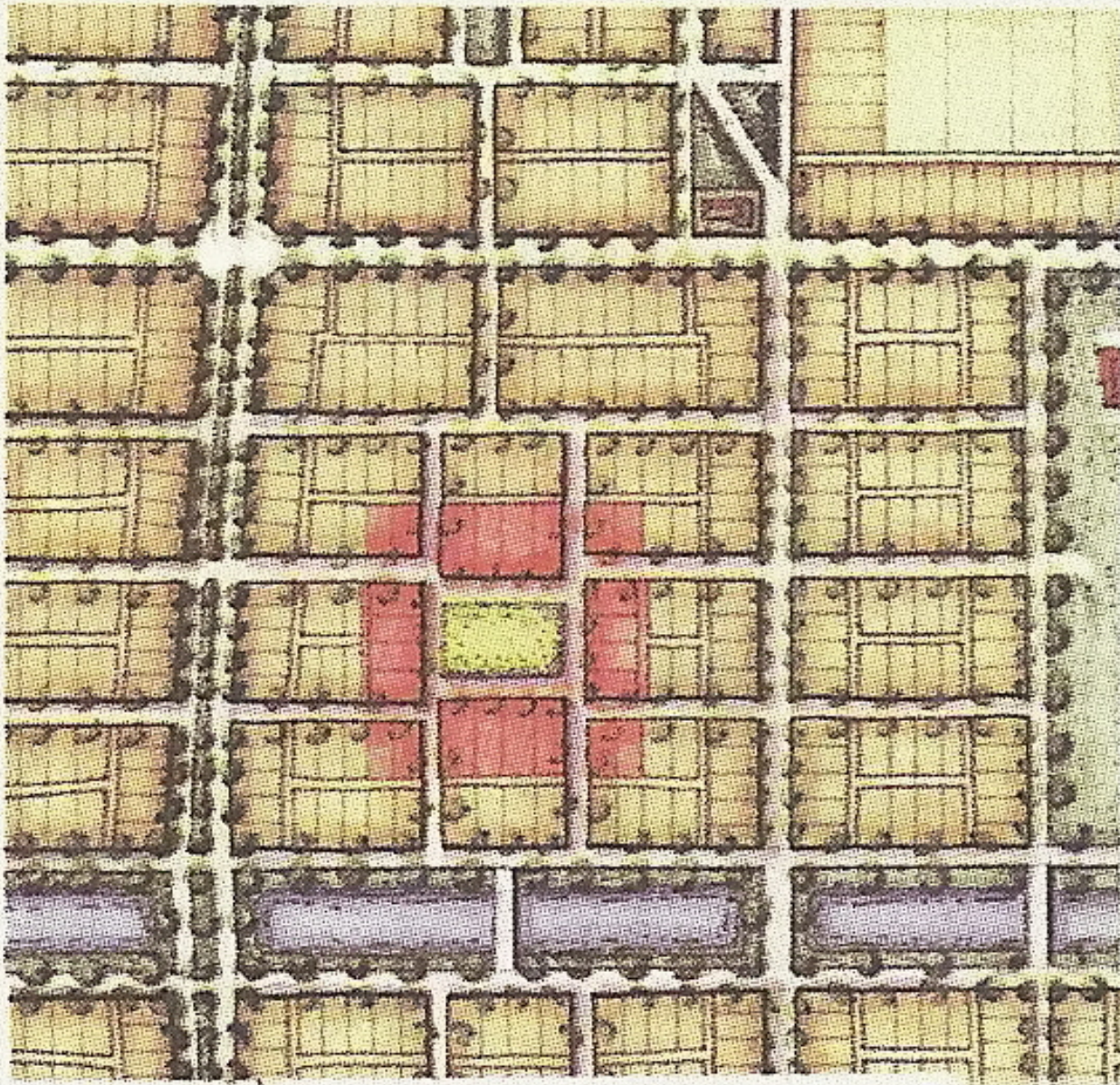
Urban Form-Basics: The Urban Neighborhood in the Town/City



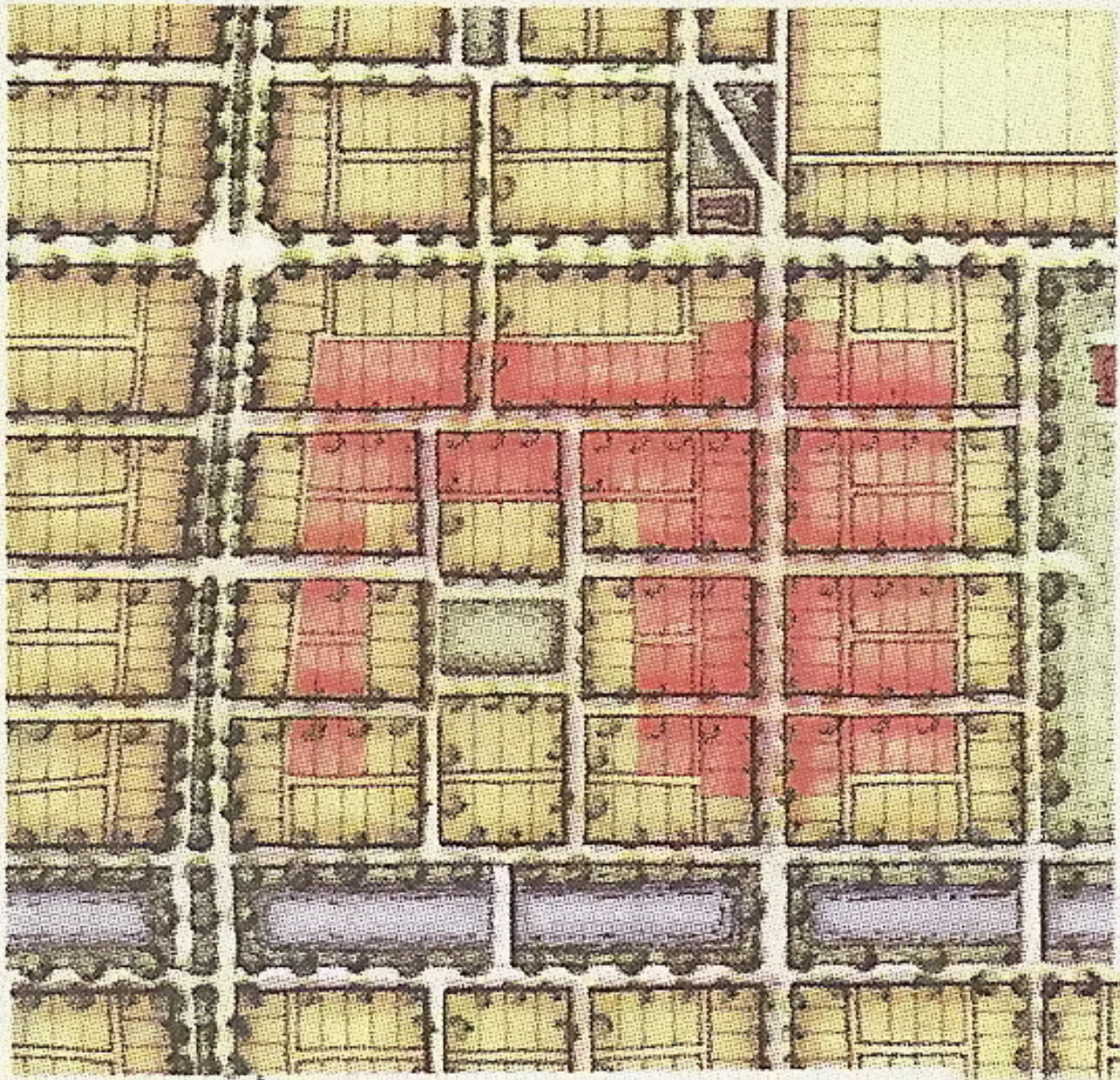
Urban Form-Basics: Hierarchy of Streets (character/function)



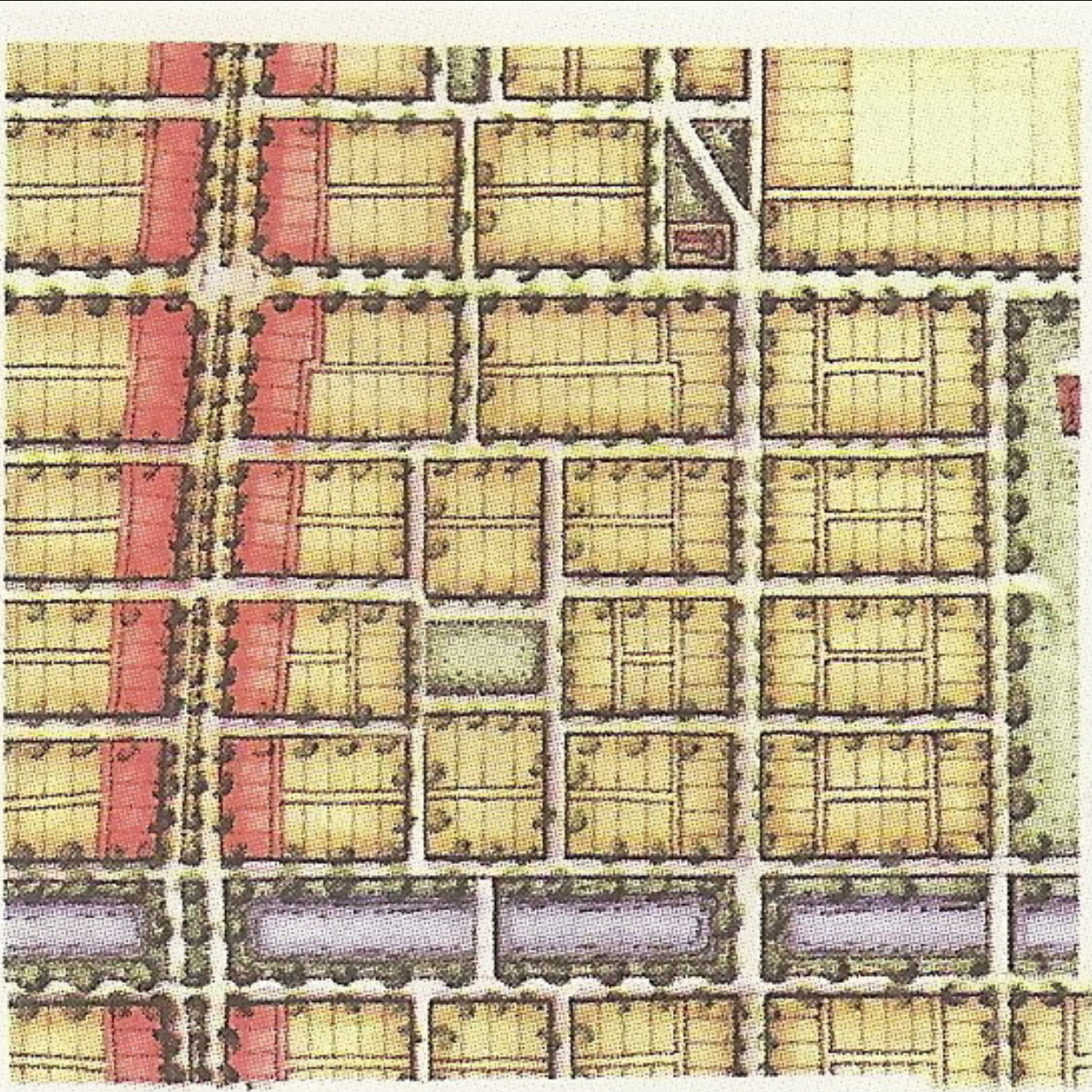
Urban Form-Basics: Hierarchy of Streets (character/function)



Urban Form-Basics: Hierarchy of Streets (character/function)



Urban Form-Basics: Hierarchy of Streets (character/function)



PLAN
of the City of Washington
in the Territory of Columbia.
asced by the States of
VIRGINIA and MARYLAND
to the United States of America,
and by them established, as the
SEAT of their GOVERNMENT,
after the Year
MDCCCL.

Designed by **Wm. B. Enslin.**

GEORGE TOWN.



Lat. Capitol. 38. 55. N.
Long. 0. 0.

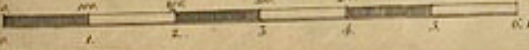
Late 1700s
Washington DC



Observations
explanatory of the Plan.

- I. **THE** positions for the different Edifices, and for the several Squares or Streets of different shapes, as they are laid down, were first determined on the most advantageous ground, considering the most extensive prospects, and the better use of such improvements as either air or ornament may hereafter call for.
- II. **LINES** or streets of direct communication have been drawn, to connect the separate and most distant objects with the principal, and to preserve through the whole a consistency of sight at the same hour. Attention has been paid to the joining of these leading streams over the most favorable ground for prospect and convenience.
- III. **NORTH** and South lines, intersected by others running due East and West, make the Distribution of the City into Streets, Squares, &c. and these lines have been so combined as to meet at certain given points with these diverging streams, so as to form on the spaces first determined, the different Squares or streets.

SCALE OF POLES.



EASTERN BRANCH.
Breadth of the Streets.

THE general Streets, and such Streets as lead immediately to public places, are from 100 to 150 feet wide, and may be conveniently divided into foot ways, walks of trees, and carriage ways. The other Streets are from 50 to 100 feet wide.

IN order to execute this plan, Mr. **ELLICOTT** drew a true meridional line by celestial Observation, which passes through the Street intended for the Capitol, this line he copied by another due East and West, which passes through the same street. These lines were accurately measured, and made the basis on which the whole plan was executed. He run all the lines by a Transit Instrument, and determined the whole angles by actual Measurement, and left nothing to the uncertainty of the Compass.

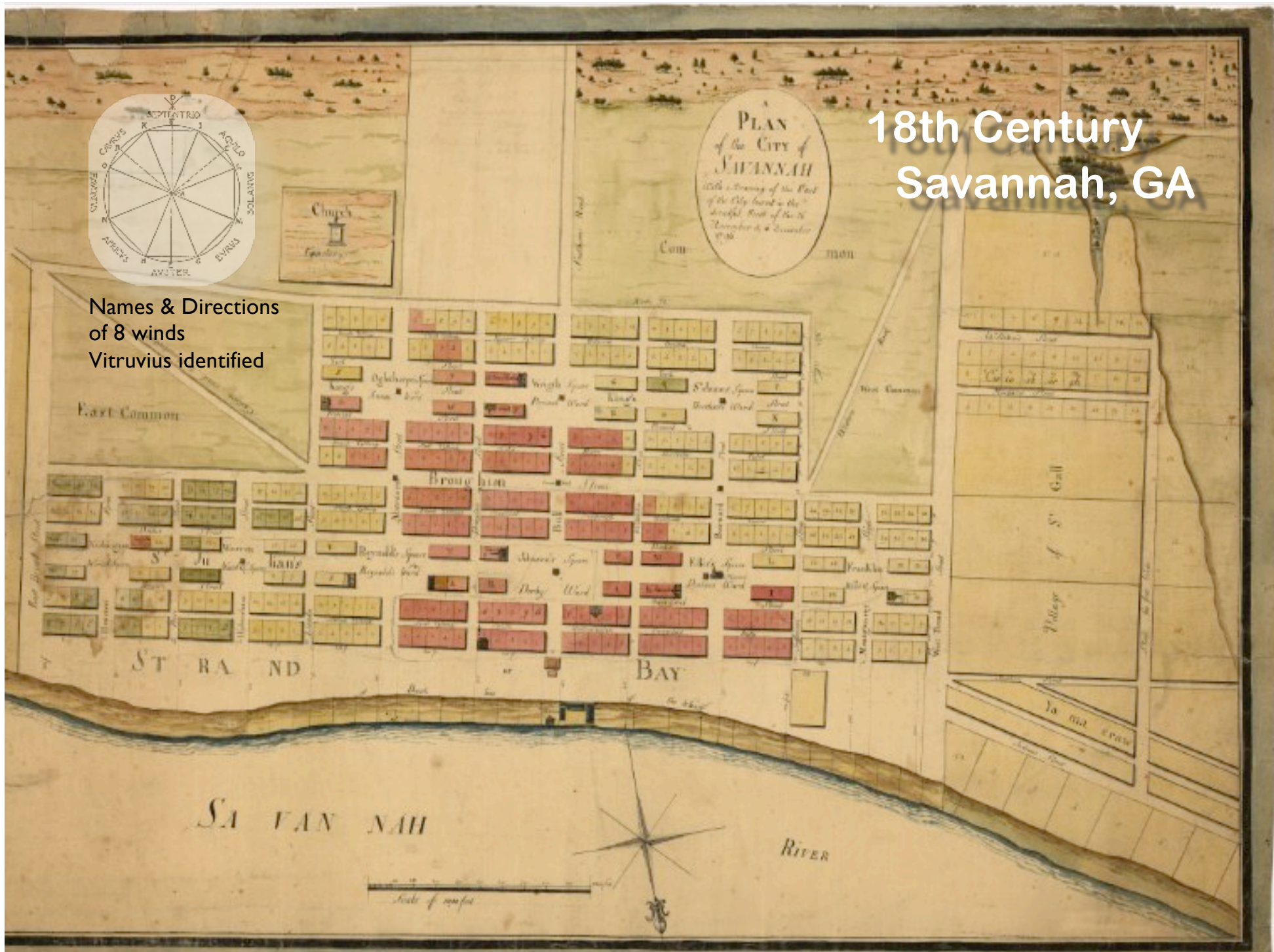


18th Century Savannah, GA



Names & Directions of 8 winds
Vitruvius identified

PLAN
of the CITY of
SAVANNAH
with a Survey of the Part
of the City laid in the
successful Part of the 16
November & a Quarter
1733





© 2007 Sanborn
Image © 2007 Sanborn

© 2006 Google™